



Newspaper Application

Description

- Newsprint reels are unloaded from railcars and delivered to the infeed conveyor by a clamp truck.
- Paper reels are weighed, barcode scanned, and stripped of outer wrapping at semi-auto Strip Assist stations
- Reels of paper are placed on outbound conveyors for pickup by the AGV.
- AGV picks up and delivers newsprint to either roll storage area or directly to running presses.
- AGV picks up full waste carts and returns empty carts for the next press run.



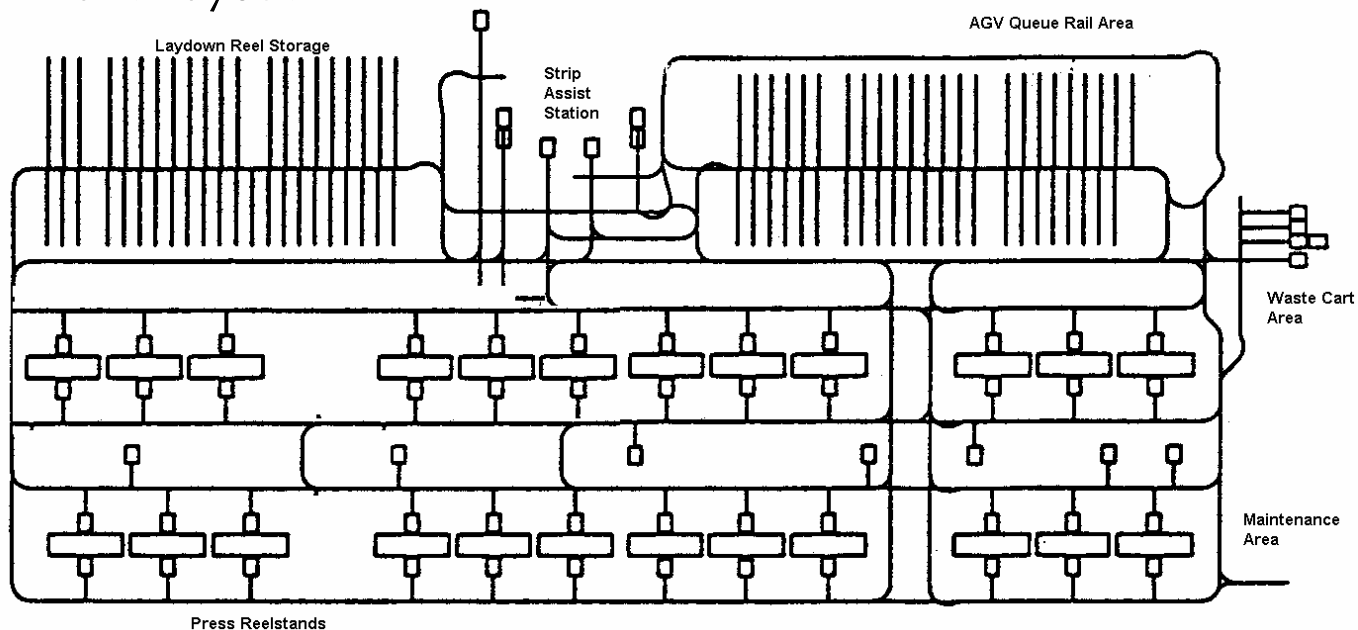
Features

Date Installed:	1991
Vehicle Type:	Fork Lift
Number of Vehicles:	15 AGVs
Application Description:	Paper Reel Storage/Delivery
Industry Description:	Newsprint
Host Computer Controls:	DEC MicroVax, VMS system
Guidance Method:	Wire
Load Description:	4,000 lb. Load Capacity Reel or Waste Cart
Pick/Drop Locations	Floor or Reelstand Dolly

Benefits

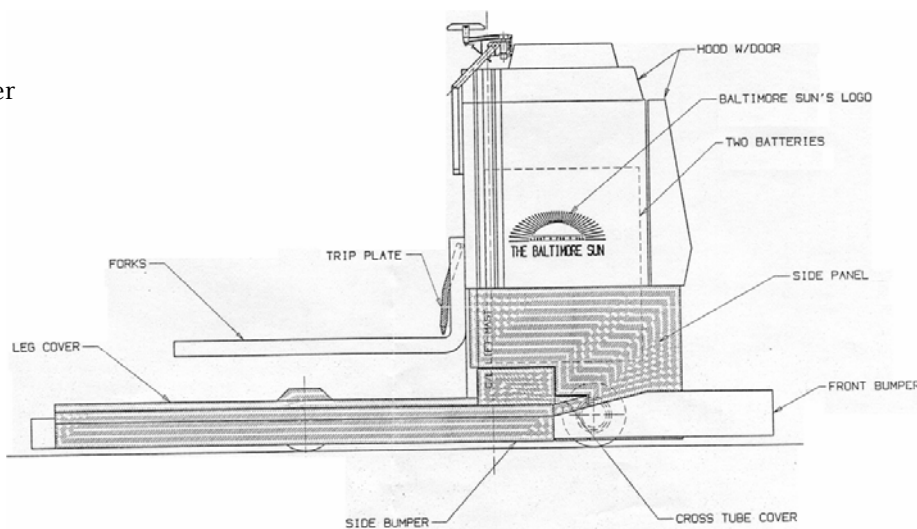
- Reduced fork truck traffic increases SAFETY
- Quick response to product handling needs SAVES TIME
- Automated paper replenishment increases EFFICIENCY
- Reduced Paper Waste
- Minimal System Supervision
- Optimal Uptime and Maintainability

Plant Layout



System Specifications

- 2 MicroVax 3300 Host Computers
- Smart Switch for Automatic Failover
- 1 DECNET-AC LAN Bridge
- 1 DESTA -BA Thinwire Ethernet Adapter
- Two printers - Report and Console
- 1 VaxStation 3100
- 6 DEC VT320 Video Terminals
- 3 Local Controllers for I/O Network
- 1 Communications Master with 2 Remote Panels
- 2 Von Roll Stripping Stations
- 1 Waste Scale - In Floor
- 1 Tote Board Personal Computer



FMC Technologies
Automated Systems
400 Highpoint Drive
Chalfont, PA 18914
P: 215-822-4300
F: 215-822-4553

FMC Europe NV
Breedstraat, 3, B-9100
Sint-Niklaas, Belgium
P: +32 3 78 01 336
F: + 32 3 77 77 955

FMC Europe, S.A. 106bd Heloise
Les Harmoniques, BP 55
95101 Argenteuil Cedex, France
P : + 331 39 96 46 73
F : + 331 39 96 46 74

FMC Technologies, Ltd.
Unit VI Winchester Avenue, Blaby Industrial Park
Blaby, Leicestershire, LE8 4GZ, United Kingdom
P : + 44 116 2642250
F : + 44 116 2642279